

# 4568

## Lever Handle



ASSA ABLOY

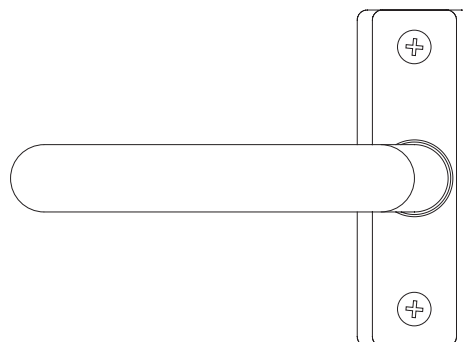
### Function

For operation of 4700 Series Deadlatches (except 4750) and MS®+1890 Latch/Deadlock. An activator cam plug is available separately that mounts on the handle escutcheon and fits solidly into the cylinder hole of the latch. Downward action on lever handle retracts latchbolt. **When used with MS®+1890 Latch/Deadlock, 4580 Cam Plug is omitted and spindle is extended to 22mm.**

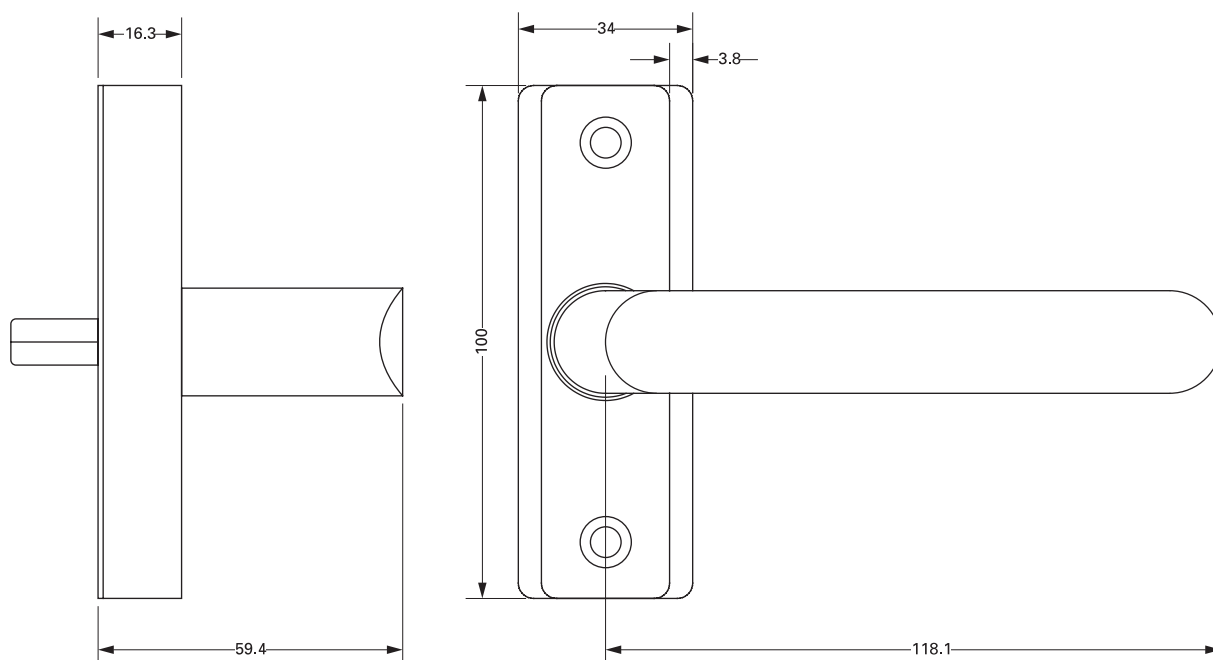
**Note:** This handle is not intended for use as a door pull. Supplied non-handed, though re-handing to suit is easily accomplished via reversible cam plug.

### Specifications

Escutcheon:	100mm x 34mm. Steel mounting base.
Material:	Cast aluminium.
Spindle:	6.35mm (1/4") on the diamond, heat treated. Interlocks with cam plug. Standard spindle lengths to suit 44.45mm (1 3/4") door thickness.
Finishes:	628 Satin Aluminium, 335 Black, 313 Bronze.
Cam Plug:	Secured in latch by cylinder set-screw.
(not supplied)	Rigidly fixed to handle escutcheon by hardened steel pins. Handing reversible.



## Dimensions



## Ordering Codes

4568-011-121	Lever Handle Bronze Anodised Aluminium Finish, 16mm spindle length for use with 4700 Series
4568-011-335	Lever Handle Black Anodised Aluminium Finish, 16mm spindle length for use with 4700 Series
4568-011-130	Lever Handle Satin Anodised Aluminium Finish, 16mm spindle length for use with 4700 Series
4568-012-121	Lever Handle Bronze Anodised Aluminium Finish, 22mm spindle length for use with MS <sup>®</sup> +1890 Series
4568-012-130	Lever Handle Satin Anodised Aluminium Finish, 22mm spindle length for use with MS <sup>®</sup> +1890 Series
4580	Cam Plug (reversible)

**Note:** Cam plug not included, order separately. Other sizes are available for thicker doors; contact the Customer Service Department for details.  
The 4568 is not suitable for use with the 4750 Deadlatch.

## Related Hardware

4710 Heavy Duty Deadlatch (p14) ~ 4720ANSI Deadlatch (p11) ~ MS<sup>®</sup>+1890 Latch/Deadlock (p20)